



The C. G. Jung Society of Queensland

Newsletter

July-September 2011, No. 68

President's Letter

Art and Myth as Ways of Knowing

Dear Friends,

One of the gifts of art and myth is to bring a larger dimension into our lives, while offering entry points into the realm of the sacred. As such, myths, art, and fairytales provide us with rich source material for our psychic, social, emotional and cultural evolution.

This quarter our Society is delighted to welcome three exciting new speakers, from Queensland, interstate, and across the globe, who will each present their varied perspectives and fascinating insights into myth and art as ways of knowing.

You may have caught the enchanting mini-documentaries on fairytales for adults that have aired this year on ABC TV. In July, Jungian analyst Sarah Gibson will talk about her process of creating this interactive *Re-Enchantment* project, plus present a tasty contemporary workshop on *Eating the House: The Hansel and Gretel Cooking Show*.

In August, internationally acclaimed local artist Kathryn Brimblecombe-Fox will share her creative experiences exploring the archetypal motif of the tree. Kathryn's images are so stunning that after attending an exhibition I found myself the unexpected owner of one of her paintings, called *Becoming*, which hangs in my study and continues to inspire me on my journey of individuation.

In September we are honoured to welcome author and President of the Chicago Society of Jungian analysts, Ashok Bedi MD, who will give a fascinating visual presentation on *India: an Odyssey of an Ancient Civilization*. Dr Bedi leads the annual "Jungian Encounter with the Soul of India" tour in conjunction with the CG Jung Foundation of New York. He will also present a Saturday seminar on the *Path to the Soul*, teaching us how to integrate Eastern and Jungian perspectives and decode the symbols of the soul that incarnate in our lives.

After keeping Society admission fees at the same low level since 2002, we have also implemented a tiny increase for our monthly lectures, to \$10 for members and \$15 for non-members. Still a small price to pay for such pearls of wisdom!

With warm wishes,

Suzanne Cremen Davidson

Fairy Tales Re-Imagined

A presentation by Sarah Gibson

Thursday 7 July 2011, 7:30 – 9:30 pm
Quaker Meeting House,
10 Hampson St, Kelvin Grove (park on Prospect Tce)
Members and concession \$10; Non-members \$15

Jungian analyst Sarah Gibson introduces us to her groundbreaking interactive project *Re-enchantment* : a journey into the hidden world of fairy tales for adults. It is a poetic and provocative act of creative interpretation of fairy tales, threading together fairy tale interpretations from the perspectives of psychology, social history and popular culture.

Traditional fairy tales have a powerful hold on our cultural imagination. Adapted, revised and bowdlerized, they greet us in print and popular fiction, at the movies and in advertisements. They have been the inspiration for many visual artists and photographers. Sarah will introduce us to her creative re-imagining of six fairy stories: *Cinderella*, *Bluebeard*, *Red Riding Hood*, *Rapunzel*, *Snow White and Hansel and Gretel*, and the work of over one hundred Australian and international visual artists who have contributed to *Re-enchantment*.

Exploring the ways fairy tales have provided creative inspiration deepens our connection to the mystery and enchantment of fairy tales. Sarah speaks of her own creative process and encourages us all to engage with and contribute to the *Re-enchantment* project.

Sarah Gibson is a Jungian analyst and experienced sandplay therapist in private practice in Balmain. She trained with the ANZSJA-CG Jung Institute. She works clinically with adults and has a particular interest in story and creativity as part of the therapeutic process. She is an artist and filmmaker. Her films include *Myths of Childhood* and *The Hundredth Room*. Sarah has just completed *Re-enchantment*, an interactive documentary project that re-imagines fairy tales for contemporary culture. Her project can be seen at <http://www.abc.net.au/re-enchantment> Sarah is also a Senior Lecturer in Media Arts at the University of Technology, Sydney.



9 July 2011

Eating the House: The Hansel and Gretel Cooking Show

A Workshop by Sarah Gibson

Saturday 9 July 2011, 10am - 4pm

Quaker Meeting House,

10 Hampson St, Kelvin Grove

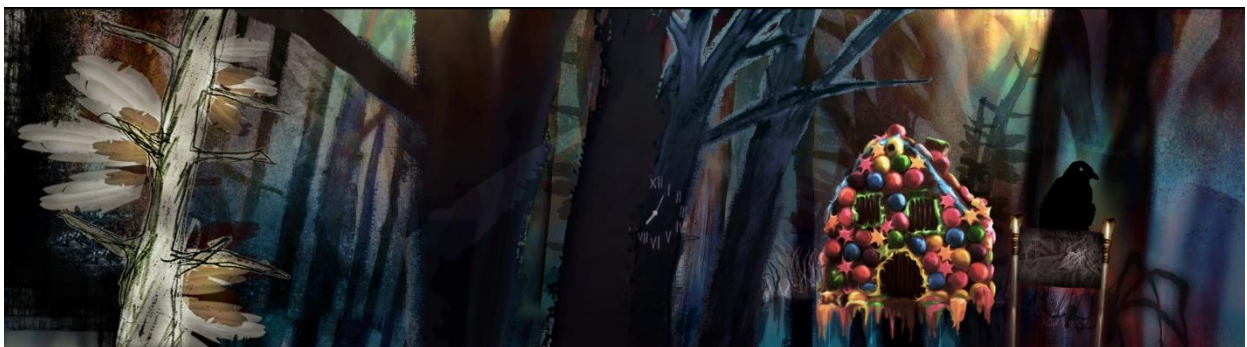
Members and concession \$85; Non-members \$100

*Morning tea will be provided. We suggest that you bring your own lunch.
Attendance certificates will be issued.*

How does the fairy story 'Hansel and Gretel' help us understand our cultural fascination with cooking shows and food programs? In this workshop Sarah Gibson leads an exploration into the psychological relevance of 'Hansel and Gretel' for contemporary culture.

Sarah will weave together different approaches to the psychological interpretation of fairy tales. We will rethink our relationship to the 'Hansel and Gretel' story. We will discuss food and the pleasures of eating. We rediscover the value of being without our GPS in the forest. We will find ourselves in the house of the dark mother and reflect on times when we may need to burn the witch in the oven.

The workshop will involve large and small group discussion as well as time for creative reflection.



Sarah Gibson is a Jungian analyst and experienced sandplay therapist in private practice in Balmain. She trained with the ANZSJA-CG Jung Institute. She works clinically with adults and has a particular interest in story and creativity as part of the therapeutic process. She is an artist and filmmaker. Her films include *Myths of Childhood* and *The Hundredth Room*. Sarah has just completed *Re-enchantment*, an interactive documentary project that re-imagines fairy tales for contemporary culture. Her project can be seen at <http://www.abc.net.au/re-enchantment> Sarah is also a Senior Lecturer in Media Arts at the University of Technology, Sydney.

To register for this workshop complete and post the form on page 11.

4 August 2011

The Trans-Cultural/ Religious Tree of Life and Knowledge: An Artist's Quest to Reinterpret Past Visual Representations to Revitalise Their Potency for the 21st Century

A presentation by Kathryn Brimblecombe-Fox

*Thursday 4 August 2011, 7:30 - 9:30 pm
Quaker Meeting House,
10 Hampson St, Kelvin Grove (park on Prospect Tce)
Members and concession \$10; Non-members \$15*

The tree-of-life/knowledge motif is an age old symbol, understood by people across time, religions and cultures. However, what does it mean to us in the 21st century? Do past visual representations connect with us? How can the tree be visually re-interpreted to revitalize its symbolic potency? Does it have the power to awaken dormant recognition of symbolic meaning? Does its trans- cultural /religious capacity hold clues to finding compassion for ourselves and others?

These are some of the questions visual artist Kathryn Brimblecombe-Fox ponders as she paints images of trees which variously cascade, morph, pulse and erupt across her canvases.

This presentation will be a journey into Kathryn's inspirations, imagination, influences, ponderings, questions and discoveries. She refers to herself as a generalist, with a bower bird-like love of collecting a broad array of ideas and information, and then finding connections and perspectives others may not see. She uses the tree motif to visually explore multiple perspectives, literally and metaphorically, to engage the viewer in a sense of discovery, where ensuing conversations with oneself or others actually complete a painting.

Kathryn will bring paintings, plus show images on Powerpoint.

Kathryn Brimblecombe-Fox BA, [double major in Art History], University of Queensland.

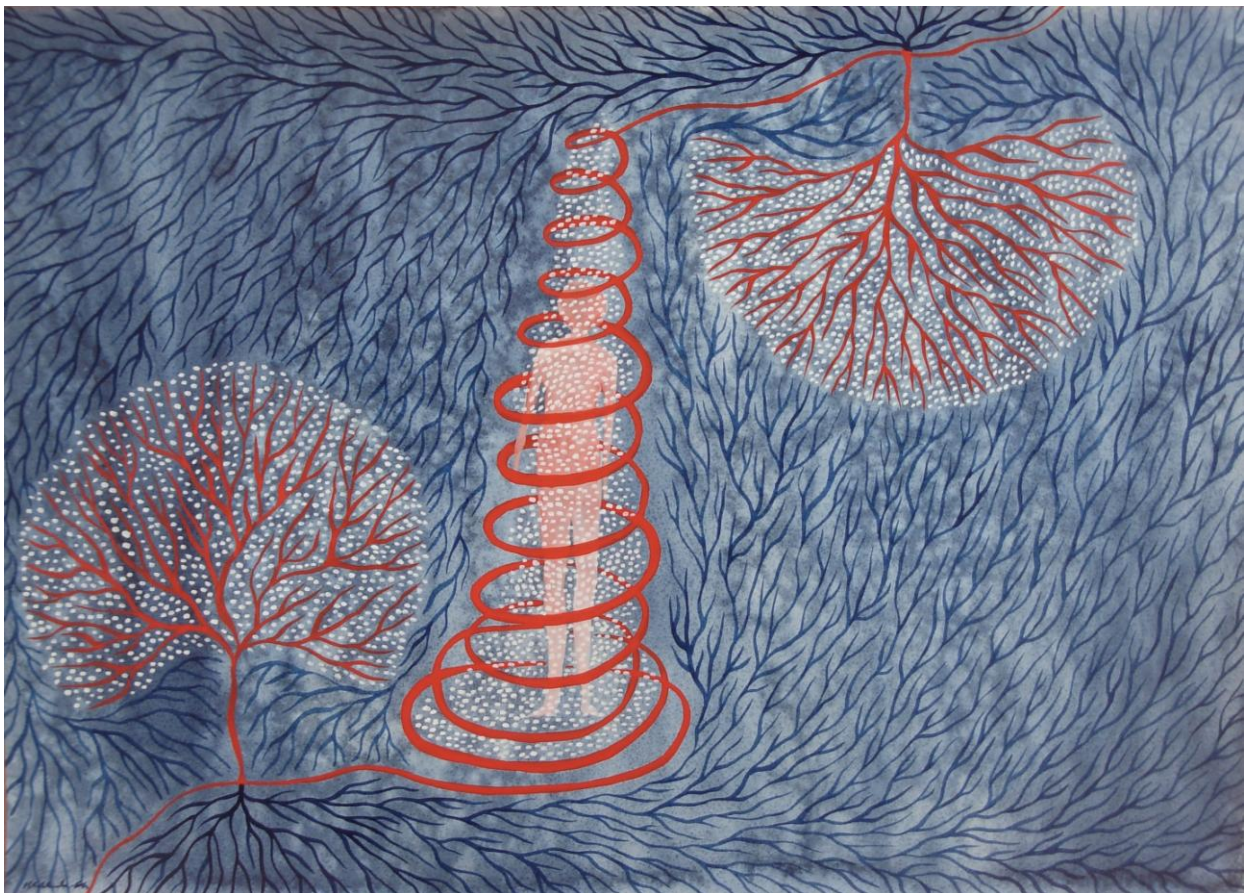
After graduating from UQ, Kathryn worked as a Curatorial Assistant at the National Gallery of Australia in Canberra. Marriage saw her leave Canberra to live in Goondiwindi, where she became involved in community life, worked as a part-time freelance curator for various regional galleries, painted and had three daughters. She moved to Brisbane ten years ago with her children. In 2001 she successfully completed a bridging program for a PhD in Art History, which she had been invited to enter. However, decided not to continue with the PhD because she wanted to focus on her art practice.

Kathryn has exhibited extensively in S.E. Queensland, Brisbane and in the last ten years she has also exhibited in London, Dubai, Abu Dhabi and Seoul. Kathryn has been the recipient of a number of art awards and has been a finalist in many others. Her work is held in private, corporate and institutional collections in Australia, Korea, Abu Dhabi, Dubai, London and the US.

In 2005/6 Kathryn was Qld Chapter Chairman of the Australia Arab Chamber of Commerce and Industry [AACCI] which represents Australian business interests in the Arab League countries of the Middle East and North Africa. She is an accomplished public speaker. She also loves to BLOG and writes a new post once a week.

www.kathrynbrimblecombeart.blogspot.com

Kathryn's full CV can be read on her website www.kathrynbrimblecombe-fox.com



Kathryn Brimblecombe-Fox. *Stillness Within*. Gouache on paper

2 September 2011

India –An Odyssey of Individuation of an ancient Civilization

**A presentation by Ashok Bedi, M.D.
President – The Chicago Society of Jungian Analysts**

***Friday 2 September 2011, 7:30 – 9:30 pm
Quaker Meeting House,
10 Hampson St, Kelvin Grove (park on Prospect Tce)
Members and concession \$10; Non-members \$15***

India is a land of cultural and religious splits. Hinduism, Islam, Christianity and Buddhism have warred for minds and souls of Indians for centuries. Yet, the Indian psyche has found a way to weave a fragile yet enduring matrix of reconciliation, healing and wholeness. The complexity of the Indian Psyche is both intriguing and overwhelming. Analytical Psychology offers us a paradigm for integration of opposites and wholeness in individuals and cultures. This process of individuation of an individual and the collective are the microcosm and the macrocosm of the same process. As Jungians, we are uniquely positioned to study the individuation process of the larger groups, societies, nations and cultures as a template for the individual. This permits us to harvest the wisdom of ancient cultures to guide the individual in its personal Odyssey.

India is the longest living ancient culture that continues to evolve within the contemporary matrix while still firmly grounded in its ancient traditions and archetypal wisdom. India continues to integrate its past into the present into its teleological destiny. India's Odyssey may be instructive to other nations and individuals as we navigate a split world with competing ideologies.

About Dr. Bedi

Ashok Bedi, M.D. is a Diplomat Jungian psychoanalyst and a board certified psychiatrist. He is a member of the Royal College of psychiatrists of Great Britain, a diplomat in Psychological Medicine at the Royal College of Physicians and Surgeons of England, a Distinguished Life Fellow of the American Psychiatric Association. He is a Clinical Professor in Psychiatry at the Medical College of Wisconsin in Milwaukee and the President-elect, a Training Analyst and a faculty member at the Analyst Training Program at the Carl G. Jung Institute of Chicago. He is a Psychiatrist at the Aurora Psychiatric Hospital and the Aurora HealthCare Network. He has been a psychiatric consultant to several agencies in Metro Milwaukee. Presently he is the consultant for the Sexual Assault treatment center at the Aurora Sinai Samaritan Hospital, Dewey Center at the Aurora Psychiatric Hospital for treatment of Addictions and the Pastoral Counseling Service of Greater Milwaukee.

Trained in India, Great Britain and the US, he is interested in the emerging frontiers of Spirituality and Healing and the synapses of the Mind, Body, Soul and Spirit. He is author of the book, *Path to the Soul*, Weiser Books, 2000, *Awaken the Slumbering Goddess: The Latent Code of the Hindu Goddess Archetypes*, Booksurge Publishers, 2007 and the coauthor of *Retire Your Family Karma*, Nicholas-Hays, Inc. 2003, These and his other upcoming presentations can be previewed at his website www.pathtothsoul.com Ashok Bedi has been in practice in Milwaukee for over twenty- five years and specializes in Adult Psychotherapy and Jungian Psychoanalysis. He regularly presents lectures and seminars in India, Great Britain, Ireland, USA & internationally on the topic of the Spiritual and analytic dimensions of treatment, healing and personal growth. Over the last several years, he has been the International Association of Analytical Psychologists liaison person for developing Jungian training programs in India and travels annually to India to teach, train the consult with the Jungian Developing groups at several centers in India including Mumbai, Ahmedabad &, Bangalore.

He leads the annual "In the Footsteps of Carl Jung in India" study group to several centers in India under the auspices of the New York Jung Foundation.

3 September 2011

Path to the Soul: An Eastern and Jungian Perspective

**A Workshop by Ashok Bedi, M.D.
President – The Chicago Society of Jungian Analysts**

SATURDAY 3 September 2011, 10am - 4pm

VENUE: Theosophical Society, Brisbane Lodge

(An historic building overlooking the city at the top of Albert Street)

355 Wickham Terrace, Brisbane, (Spring Hill)

Members and concession \$85; Non-members \$100

*Morning tea will be provided. We suggest that you bring your own lunch.
Attendance certificates will be issued.*

In first half of life, we must establish our ground to survive in the outer world in the realm of Maya and in the process accumulate positive and negative Karma. In the second half of life, we have to rebalance our Karmic balance sheet guided by our soul's whispers to attend to our Dharma or Purpose in this lifetime. Participants would be introduced to the integrative Hindu and Jungian perspective on establishing their path to their soul, by decoding the symbols of our soul that incarnate in our life. These symbols manifest as dreams, fantasies, complexes, synchronistic events, accidents, relationship tangles, and creative outputs, medical and psychiatric symptoms & Kundalini events. All these incarnations of the soul carry a potential symbol. These symbols have the potential to renew and rekindle the vitality and purposefulness of our life. Methods to decode and honor these soul symbols will be explored using case vignettes and film clips.

Learning Objectives:

1. Lay out the Jungian & the Hindu path to the soul
2. Discuss the concepts of Maya, Karma and Dharma
3. Explore some of the fundamentals of Kundalini Yoga
4. Present a framework to engage the healing wisdom of the soul
5. Formulate the workings of the archetypes of Ganesha & Aditi to demonstrate the universality of the ancestral wisdom on our path to the Soul

Suggested Readings

Path to the Soul by Ashok Bedi, Samuel Weiser Inc. Publishers 2000

Retire Your Family Karma by Ashok Bedi and Boris Matthews, Nicholas Hayes Inc. Publishers, 2003

Awakening the Slumbering Goddess- The Latent Code of the Hingu Goddess Archetypes by Ashok Bedi, M.D., Booksurge Publishers, 2007

To register for this workshop complete and post the form on page 11.

About Dr. Bedi

Ashok Bedi, M.D. is a Diplomat Jungian psychoanalyst and a board certified psychiatrist. He is a member of the Royal College of psychiatrists of Great Britain, a diplomat in Psychological Medicine at the Royal College of Physicians and Surgeons of England, a Distinguished Life Fellow of the American Psychiatric Association. He is a Clinical Professor in Psychiatry at the Medical College of Wisconsin in Milwaukee and the President-elect, a Training Analyst and a faculty member at the Analyst Training Program at the Carl G. Jung Institute of Chicago. He is a Psychiatrist at the Aurora Psychiatric Hospital and the Aurora HealthCare Network. He has been a psychiatric consultant to several agencies in Metro Milwaukee. Presently he is the consultant for the Sexual Assault treatment center at the Aurora Sinai Samaritan Hospital, Dewey Center at the Aurora Psychiatric Hospital for treatment of Addictions and the Pastoral Counseling Service of Greater Milwaukee.

Trained in India, Great Britain and the US, he is interested in the emerging frontiers of Spirituality and Healing and the synapses of the Mind, Body, Soul and Spirit. He is author of the book, Path to the Soul, Weiser Books, 2000, Awaken the Slumbering Goddess: The Latent Code of the Hindu Goddess Archetypes, Booksurge Publishers, 2007 and the coauthor of Retire Your Family Karma, Nicholas-Hays, Inc. 2003, These and his other upcoming presentations can be previewed at his website www.pathtothesoul.com

Ashok Bedi has been in practice in Milwaukee for over twenty- five years and specializes in Adult Psychotherapy and Jungian Psychoanalysis. He regularly presents lectures and seminars in India, Great Britain, Ireland, USA & internationally on the topic of the Spiritual and analytic dimensions of treatment, healing and personal growth. Over the last several years, he has been the International Association of Analytical Psychologists liaison person for developing Jungian training programs in India and travels annually to India to teach, train the consult with the Jungian Developing groups at several centers in India including Mumbai, Ahmedabad & Bangalore. He leads the annual "In the Footsteps of Carl Jung in India" study group to several centers in India under the auspices of the New York Jung Foundation.



To register for Dr Bedi's workshop complete and post the form on page 11.

Book Review: Reading *Depth Psychology and a New Ethic* by Erich Neumann

Boston, Shambhala, 1990 (First published in German in 1949)

Jung often stressed that, as a doctor, his chief concern was with healing, so it is not surprising that in his foreword to Erich Neumann's *Depth Psychology and a New Ethic* he declared "... it is only as an empiricist, and never as a philosopher, that I have been concerned with depth psychology, and cannot boast of ever having tried my hand at formulating ethical principles".

Yet morality is deeply implicit in all of Jung's work. He considered the integration of the shadow and the conscious path of individuation to be a moral necessity. Erich Neumann's book makes explicit what is implicit in Jung's work.

The old ethic is inadequate, says Neumann, because it is one-sided, with its emphasis on perfection and the disowning of the negative. It results in splitting – the negative is split off and projected on to the "enemy" – and its values can only be imposed through suppression and repression.

The new ethic is based on consciousness of the inescapability of polarity. It is oriented towards wholeness. It is no longer individualistic but takes into account the effect that the individual's attitude will have upon the collective. Attention is paid to the unconscious, including "a responsible relationship with the primitive mass man who exists as an inner component in every personality" (p. 93). "The only person who is morally acceptable in the eye of the new ethic is the person who has accepted his shadow problem..." (p. 91)

When the book first appeared there was criticism that the author wished to sweep away the moral values of society, but Jung says in his foreword that the new ethic is a development within the old ethic, not a sweeping away of the old.

Neumann wrote this book in the period immediately after the Second World War when the problem of Evil and the failure to have recognised the dangers in the rise of National Socialism in Germany were uppermost in European consciousness. Hence the book has much to offer to our thinking about an ethical public life.

About those who are players in public life, Neumann says "The individual must work through his own basic moral problem before he is in a position to play a responsible part in the collective"... "The incompetence of the politicians, which has become so cruelly and sanguinarily obvious to modern man, is essentially due to their human inadequacy – that is, to a moral undermining of their psychic structure which culminates in their total breakdown when faced with any real decision...

"From the point of view of the new ethic, the moral inadequacy of a politician does not reside in the fact that on the conscious level he is not a morally acceptable personality ...It is his total unconsciousness of the shadow and the illusory orientation of consciousness that accompanies this kind of unawareness which is the decisive ... factor. (p. 91)

We have met the enemy and he is us.

These words originated with the American cartoonist Walt Kelly (1913–1973) and were used in an anti-pollution poster for Earth Day 1970. They have been echoing in my head recently as I listen in despair to the rhetoric that replaces intelligent public debate, particularly among politicians, with regard to action to deal with climate change. In their rhetoric, the players on each side have taken one of the opposites and raised it to an absolute: “This or this” – the split of the old ethic; whereas, the reality is “This and this” – the wholeness of the new ethic.

The enemy is us. These words are as true today in relation to global warming as they were in relation to environmental pollution forty years ago. When the politicians speak of making “the big polluters” pay, it is an example of splitting - we are all the polluters. And we need to live from the resources of our planet. Both need to be held.

Erich Neumann’s book points towards the future – of “the way of what is to come”, as Jung entitled the first chapter of the *Red Book* – towards a meaningful ethical framework for the conduct not only of individual lives but also of the collective in political and public discourse.

Anne Di Lauro

Bulletin Board

Greetings!

Some of you already know, to others this will be a complete surprise. This year I’ve surprised myself too – I’ve started a podcast!

Here’s the link: www.frogonarockfairytale.com.au

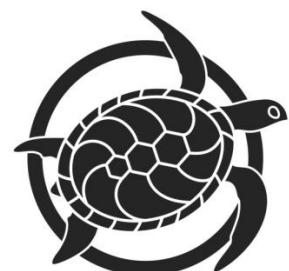
I’m passionate about fairytales because they tap into the spring of the unconscious. Fairytales nourish your soul so you can follow your bliss!

I love to delve the depths of the stories and mine the meaning of the symbols in them. Delving and mining are earthy metaphors, and fairytales are earthy – they deal with life down here on earth and can teach us so much. That’s why they are so embedded in our culture, including advertising and film.

So now I can share this passion and you can listen to me reading classic, unmodified versions of Grimm’s, Andersen’s and other fairytales on your computer, or on your other listening device. I’ve published my first one and will be putting them up monthly.

When you have listened and explored my website, I would love you to subscribe, leave me a comment on any of the pages, and send this on to anyone you know who may be interested.

Thanks,
Pam Blamey



About the C.G. Jung Society of Queensland

The C.G. Jung Society of Queensland is committed to furthering awareness of and reflection upon the writings of the Swiss psychologist Carl Gustav Jung (1875-1961). The Society promotes an understanding of Jung's work through the exploration of its psychological and spiritual applications to the individual journey and interpersonal relationships, and by considering the ways in which Jung's writings and ideas can contribute to the healing of modern society.

The Society does this through offering monthly presentations, occasional workshops and small groups, all of which are open to both members and non-members. Monthly presentations are normally held at 7:30 pm on the first Thursday of each month, from February to December, at the Quaker Meeting House, 10 Hampson Street, Kelvin Grove. It is a beautiful venue with a quiet spiritual atmosphere in a forest setting, only a short ride from the city by bus. Parking inside the grounds is limited, but available on Prospect Terrace.

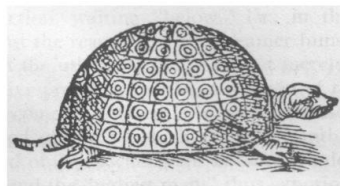
Established in 1982, the Society is a non-profit and non-professional association. The Society's events are attended by people of all ages and all walks of life.

Members of the C.G. Jung Society of Queensland are entitled to:

- reduced admission fee to monthly presentations and workshops
- use of our library of Jungian books
- our quarterly newsletter
- advertising via e-mail of members' workshops (if they are relevant to the Jungian scope of the Society)

Annual membership fee (Jan-Dec): \$35

(\$25 concession/student/pension; \$50 couples/family; \$12 newsletter only)



C.G. Jung Society of Queensland - Committee for 2011

President	Suzanne Cremen Davidson	0403 767 161	president@jungqld.com
Treasurer	Anne Di Lauro	3511 0167	dilauro@ozemail.com.au
Membership Secretary	Pam Blamey	3876 0214	pamblamey@yahoo.com.au
Committee Secretary	Monica Sharwood	3847 3077	monicasharwood@bigpond.com
Librarian	Marie Sinclair	3371 1285	mbs03@bigpond.net.au
Newsletter editor	Suzanne Cremen Davidson	0403 767 161	president@jungqld.com
Committee member	Anna Conaty	3371 3087	ajconaty@hotmail.com
Committee member	Ghislaine Salter	3278 1127	ghislaine.salter@gmail.com